

National Testing Agency

Question Paper Name :	Online Refresher Course In Pharmacy For Higher Education 15th Sep 2020 Shift 1
Subject Name :	Online Refresher Course In Pharmacy For Higher Education
Creation Date :	2020-09-15 13:26:30
Duration :	180
Total Marks :	100
Display Marks:	Yes
Share Answer Key With Delivery Engine :	Yes
Actual Answer Key :	Yes

Online Refresher Course In Pharmacy For Higher Education

Group Number :	1
Group Id :	89951416
Group Maximum Duration :	0
Group Minimum Duration :	120
Show Attended Group? :	No
Edit Attended Group? :	No
Break time :	0
Group Marks :	100
Is this Group for Examiner? :	No

Online Refresher Course In Pharmacy For Higher Education

Section Id :	89951416
Section Number :	1
Section type :	Online
Mandatory or Optional :	Mandatory

Number of Questions :	100
Number of Questions to be attempted :	100
Section Marks :	100
Display Number Panel :	Yes
Group All Questions :	Yes
Mark As Answered Required? :	Yes
Sub-Section Number :	1
Sub-Section Id :	89951426
Question Shuffling Allowed :	Yes

Question Number : 1 Question Id : 8995141196 Question Type : MCQ Option Shuffling : No Display Question Number : Yes Is Question Mandatory : No Single Line Question Option : No Option Orientation : Vertical Correct Marks : 1 Wrong Marks : 0

X-ray diffractometers are not used to identify the physical properties of which of the following?

1. Metals
2. Liquids
3. Polymeric Materials
4. Solids

Options :

- 8995144760. 1
- 8995144761. 2
- 8995144762. 3
- 8995144763. 4

Question Number : 2 Question Id : 8995141197 Question Type : MCQ Option Shuffling : No Display Question Number : Yes Is Question Mandatory : No Single Line Question Option : No Option Orientation : Vertical Correct Marks : 1 Wrong Marks : 0

Glutathione is a -----

1. Tripeptide
2. Dipeptide
3. Pentapeptide
4. Tetrapeptide

Options :

- 8995144764. 1
- 8995144765. 2
- 8995144766. 3
- 8995144767. 4

Question Number : 3 Question Id : 8995141198 Question Type : MCQ Option Shuffling : No Display Question Number : Yes Is Question Mandatory : No Single Line Question Option : No Option Orientation : Vertical

Correct Marks : 1 Wrong Marks : 0

What is the advantage of cyclic peptides over their linear counterparts?

1. higher stability in the presence of enzymes
2. Rigid conformation
3. Higher cellular uptake
4. All of the above

Options :

- 8995144768. 1
- 8995144769. 2
- 8995144770. 3
- 8995144771. 4

Question Number : 4 Question Id : 8995141199 Question Type : MCQ Option Shuffling : No Display Question Number : Yes Is Question Mandatory : No Single Line Question Option : No Option Orientation : Vertical

Correct Marks : 1 Wrong Marks : 0

With the help of which of the following equations, the distance is calculated from a known wavelength of the source and measured angle?

1. Coolidge equation
2. Bragg's equation
3. Debye equation
4. Scherrer equation

Options :

- 8995144772. 1
- 8995144773. 2
- 8995144774. 3
- 8995144775. 4

Question Number : 5 Question Id : 8995141200 Question Type : MCQ Option Shuffling : No Display Question Number : Yes Is Question Mandatory : No Single Line Question Option : No Option Orientation : Vertical

Correct Marks : 1 Wrong Marks : 0

X-ray diffractometers provide _____ information about the compounds present in a solid sample.

1. Quantitative
2. Qualitative
3. Quantitative and qualitative
4. Either quantitative or qualitative

Options :

- 8995144776. 1
- 8995144777. 2
- 8995144778. 3
- 8995144779. 4

Question Number : 6 Question Id : 8995141201 Question Type : MCQ Option Shuffling : No Display Question Number : Yes Is Question Mandatory : No Single Line Question Option : No Option Orientation : Vertical

Correct Marks : 1 Wrong Marks : 0

What is the reason behind the use of peptides in intracellular drug delivery?

1. Low cytotoxicity
2. Specific targeting
3. Chemical diversity
4. All of the above

Options :

- 8995144780. 1
- 8995144781. 2
- 8995144782. 3
- 8995144783. 4

Question Number : 7 Question Id : 8995141202 Question Type : MCQ Option Shuffling : No Display Question Number : Yes Is Question Mandatory : No Single Line Question Option : No Option Orientation : Vertical

Correct Marks : 1 Wrong Marks : 0

The term used to refer something “performed on computer or computer simulation”

1. Dry Lab
2. Wet lab
3. Web lab
4. Insilico

Options :

- 8995144784. 1
- 8995144785. 2
- 8995144786. 3
- 8995144787. 4

Question Number : 8 Question Id : 8995141203 Question Type : MCQ Option Shuffling : No Display Question Number : Yes Is Question Mandatory : No Single Line Question Option : No Option Orientation : Vertical

Correct Marks : 1 Wrong Marks : 0

The computational methodology that tries to find the best matching between two molecules, a receptor and a ligand is called----

- 1.Molecular matching
- 2.Molecular docking
- 3.Molecular fitting
- 4.Molecular affinity checking

Options :

- 8995144788. 1
- 8995144789. 2
- 8995144790. 3
- 8995144791. 4

Question Number : 9 Question Id : 8995141204 Question Type : MCQ Option Shuffling : No Display Question Number : Yes Is Question Mandatory : No Single Line Question Option : No Option Orientation : Vertical

Correct Marks : 1 Wrong Marks : 0

A compound that has desirable properties to become a drug is called

- 1.Lead
- 2.Fit drug
- 3.Fit compound
- 4.Pharmacophore

Options :

- 8995144792. 1
- 8995144793. 2
- 8995144794. 3
- 8995144795. 4

Question Number : 10 Question Id : 8995141205 Question Type : MCQ Option Shuffling : No Display Question Number : Yes Is Question Mandatory : No Single Line Question Option : No Option Orientation : Vertical

Correct Marks : 1 Wrong Marks : 0

Which of the following is not a characteristic of ideal prodrug?

1. Should rapidly transform chemically and/or Enzymatically, forming the active product
2. Should have intrinsic pharmacological activity
3. The vapour pressure should be more and evaporate easily
4. Apart from an active product, other metabolic fragments should be nontoxic

Options :

- 8995144796. 1
- 8995144797. 2
- 8995144798. 3
- 8995144799. 4

Question Number : 11 Question Id : 8995141206 Question Type : MCQ Option Shuffling : No Display Question Number : Yes Is Question Mandatory : No Single Line Question Option : No Option Orientation : Vertical

Correct Marks : 1 Wrong Marks : 0

Which is the earliest discovered prodrug?

1. Prontosil
2. Sulphanilamide
3. Aspirin
4. Salicylic acid

Options :

- 8995144800. 1
- 8995144801. 2
- 8995144802. 3
- 8995144803. 4

Question Number : 12 Question Id : 8995141207 Question Type : MCQ Option Shuffling : No Display Question Number : Yes Is Question Mandatory : No Single Line Question Option : No Option Orientation : Vertical Correct Marks : 1 Wrong Marks : 0

The accepted size range of nanoparticles for pharmaceutical purpose is in between ----
nm

- 1.100-1000
- 2.0.1-100
- 3.1-100
- 4.0.01-1

Options :

8995144804. 1
8995144805. 2
8995144806. 3
8995144807. 4

Question Number : 13 Question Id : 8995141208 Question Type : MCQ Option Shuffling : No Display Question Number : Yes Is Question Mandatory : No Single Line Question Option : No Option Orientation : Vertical Correct Marks : 1 Wrong Marks : 0

Which one of the following is NOT true?

Tablets are often coated _____

1. to protect the drug from the external environment
2. to mask the bitter taste
3. to increase friability
4. to make swallowing easier

Options :

8995144808. 1
8995144809. 2
8995144810. 3
8995144811. 4

Question Number : 14 Question Id : 8995141209 Question Type : MCQ Option Shuffling : No Display Question Number : Yes Is Question Mandatory : No Single Line Question Option : No Option Orientation : Vertical Correct Marks : 1 Wrong Marks : 0

Which one of the following is NOT true?

1. Modified release formulations are most useful for drugs with a long half-life
2. Modified release formulations can often reduce side-effects
3. Modified release formulations can improve patient compliance
4. Modified release formulations can be used for local drug delivery

Options :

- 8995144812. 1
- 8995144813. 2
- 8995144814. 3
- 8995144815. 4

Question Number : 15 Question Id : 8995141210 Question Type : MCQ Option Shuffling : No Display Question Number : Yes Is Question Mandatory : No Single Line Question Option : No Option Orientation : Vertical Correct Marks : 1 Wrong Marks : 0

Which one of the following is NOT a concentration unit?

1. Mass per volume
2. Molarity
3. Milliequivalent
4. Enthalpy

Options :

- 8995144816. 1
- 8995144817. 2
- 8995144818. 3
- 8995144819. 4

Question Number : 16 Question Id : 8995141211 Question Type : MCQ Option Shuffling : No Display Question Number : Yes Is

Question Mandatory : No Single Line Question Option : No Option Orientation : Vertical

Correct Marks : 1 Wrong Marks : 0

Which one of the following is NOT true?

1. Drug release from reservoir systems is controlled by diffusion
2. Drug release from matrix systems is controlled by diffusion
3. Drug release from reservoir systems normally follow zero-order kinetics
4. Drug release from matrix systems normally follow zero-order kinetics

Options :

- 8995144820. 1
- 8995144821. 2
- 8995144822. 3
- 8995144823. 4

Question Number : 17 Question Id : 8995141212 Question Type : MCQ Option Shuffling : No Display Question Number : Yes Is

Question Mandatory : No Single Line Question Option : No Option Orientation : Vertical

Correct Marks : 1 Wrong Marks : 0

What is graphene?

1. A new material made from carbon nanotubes
2. A one-atom thick sheet of carbon
3. Thin film made from fullerenes
4. A software tool to measure and graphically represent nanoparticles

Options :

- 8995144824. 1
- 8995144825. 2
- 8995144826. 3
- 8995144827. 4

Question Number : 18 Question Id : 8995141213 Question Type : MCQ Option Shuffling : No Display Question Number : Yes Is Question Mandatory : No Single Line Question Option : No Option Orientation : Vertical Correct Marks : 1 Wrong Marks : 0

What exactly is a quantum dot?

1. A semiconductor nanostructure that confines the motion of conduction band electrons, valence band holes, or excitons in all three spatial directions
2. The sharpest possible tip of an Atomic Force Microscope
3. A fictional term used in science fiction for the endpoints of wormholes
4. Unexplained spots that appear in electron microscopy images of nanostructures smaller than 1 nanometer

Options :

- 8995144828. 1
- 8995144829. 2
- 8995144830. 3
- 8995144831. 4

Question Number : 19 Question Id : 8995141214 Question Type : MCQ Option Shuffling : No Display Question Number : Yes Is Question Mandatory : No Single Line Question Option : No Option Orientation : Vertical Correct Marks : 1 Wrong Marks : 0

What is the equation of bioavailable fraction?

1. $1/\text{Bioavailable dose}$
2. $1/\text{Administered dose}$
3. $\text{Bioavailable dose}/\text{Administered dose}$
4. $\text{Administered dose}/\text{Bioavailable dose}$

Options :

- 8995144832. 1
- 8995144833. 2
- 8995144834. 3
- 8995144835. 4

Question Number : 20 Question Id : 8995141215 Question Type : MCQ Option Shuffling : No Display Question Number : Yes Is Question Mandatory : No Single Line Question Option : No Option Orientation : Vertical Correct Marks : 1 Wrong Marks : 0

Which of the following will not be a parameter that should be examined for urinary excretion data?

1. $(dX_u/dt)_{max}$
2. $(t_u)_{max}$
3. X_u
4. C_{max}

Options :

- 8995144836. 1
- 8995144837. 2
- 8995144838. 3
- 8995144839. 4

Question Number : 21 Question Id : 8995141216 Question Type : MCQ Option Shuffling : No Display Question Number : Yes Is Question Mandatory : No Single Line Question Option : No Option Orientation : Vertical Correct Marks : 1 Wrong Marks : 0

Nano sized polymers built from branched units are called _____

1. Dendrimers
2. Composites
3. Carbon-based materials
4. Metal-based materials

Options :

- 8995144840. 1
- 8995144841. 2
- 8995144842. 3
- 8995144843. 4

Question Number : 22 Question Id : 8995141217 Question Type : MCQ Option Shuffling : No Display Question Number : Yes Is Question Mandatory : No Single Line Question Option : No Option Orientation : Vertical

Correct Marks : 1 Wrong Marks : 0

Example of osmotic drug delivery system include

1. Push-Pull
2. Elementary OROS
3. All the above
4. None of the above

Options :

- 8995144844. 1
- 8995144845. 2
- 8995144846. 3
- 8995144847. 4

Question Number : 23 Question Id : 8995141218 Question Type : MCQ Option Shuffling : No Display Question Number : Yes Is Question Mandatory : No Single Line Question Option : No Option Orientation : Vertical

Correct Marks : 1 Wrong Marks : 0

To be a successful extended-release product, the drug must be released from the dosage form at a

1. Fixed concentration
2. Predetermined rate
3. All of the above
4. None of the above

Options :

- 8995144848. 1
- 8995144849. 2
- 8995144850. 3
- 8995144851. 4

Question Number : 24 Question Id : 8995141219 Question Type : MCQ Option Shuffling : No Display Question Number : Yes Is Question Mandatory : No Single Line Question Option : No Option Orientation : Vertical

Correct Marks : 1 Wrong Marks : 0

Name of pharmaceutical regulatory body in India is

- 1.MHRA
- 2.FDA
- 3.CDSCO
- 4.PMDA

Options :

8995144852. 1
8995144853. 2
8995144854. 3
8995144855. 4

Question Number : 25 Question Id : 8995141220 Question Type : MCQ Option Shuffling : No Display Question Number : Yes Is Question Mandatory : No Single Line Question Option : No Option Orientation : Vertical

Correct Marks : 1 Wrong Marks : 0

Who is considered as the 'Father of Pharmacy' in India?

- 1.M.L. Schroff
- 2.B.N. Sharma
- 3.William Procter
- 4.Bill Procter

Options :

8995144856. 1
8995144857. 2
8995144858. 3
8995144859. 4

Question Number : 26 Question Id : 8995141221 Question Type : MCQ Option Shuffling : No Display Question Number : Yes Is Question Mandatory : No Single Line Question Option : No Option Orientation : Vertical

Correct Marks : 1 Wrong Marks : 0

Who is the head of USFDA

1. Director
2. Secretary
3. Commissioner
4. Minister

Options :

- 8995144860. 1
- 8995144861. 2
- 8995144862. 3
- 8995144863. 4

Question Number : 27 Question Id : 8995141222 Question Type : MCQ Option Shuffling : No Display Question Number : Yes Is Question Mandatory : No Single Line Question Option : No Option Orientation : Vertical Correct Marks : 1 Wrong Marks : 0

Where the list of approved drug products by USFDA is available?

1. Blue book
2. Orange book
3. Red book
4. Drugs@fda book

Options :

- 8995144864. 1
- 8995144865. 2
- 8995144866. 3
- 8995144867. 4

Question Number : 28 Question Id : 8995141223 Question Type : MCQ Option Shuffling : No Display Question Number : Yes Is Question Mandatory : No Single Line Question Option : No Option Orientation : Vertical Correct Marks : 1 Wrong Marks : 0

The word "Encapsulation" is used in case of which type of nano drug delivery system?

1. Vesicular system like liposomes
2. Polymeric Nanoparticles
3. Inorganic nanoparticles
4. Metallic nanoparticles

Options :

- 8995144868. 1
- 8995144869. 2
- 8995144870. 3
- 8995144871. 4

Question Number : 29 Question Id : 8995141224 Question Type : MCQ Option Shuffling : No Display Question Number : Yes Is Question Mandatory : No Single Line Question Option : No Option Orientation : Vertical

Correct Marks : 1 Wrong Marks : 0

Which type of packaging is more resistant to light and moisture?

1. Blister packaging
2. Strip packaging
3. All of the above
4. None of the above

Options :

- 8995144872. 1
- 8995144873. 2
- 8995144874. 3
- 8995144875. 4

Question Number : 30 Question Id : 8995141225 Question Type : MCQ Option Shuffling : No Display Question Number : Yes Is Question Mandatory : No Single Line Question Option : No Option Orientation : Vertical

Correct Marks : 1 Wrong Marks : 0

Ophthalmic containers are _____ and hence prone to moisture loss, uptake and leachables

1. Semi permeable
2. Fully permeable
3. Not permeable
4. None of the above

Options :

- 8995144876. 1
- 8995144877. 2
- 8995144878. 3
- 8995144879. 4

Question Number : 31 Question Id : 8995141226 Question Type : MCQ Option Shuffling : No Display Question Number : Yes Is Question Mandatory : No Single Line Question Option : No Option Orientation : Vertical Correct Marks : 1 Wrong Marks : 0

What factor has to be kept in mind while choosing the right pack for the product?

1. Protection
2. Stability
3. Cost
4. All of the above

Options :

- 8995144880. 1
- 8995144881. 2
- 8995144882. 3
- 8995144883. 4

Question Number : 32 Question Id : 8995141227 Question Type : MCQ Option Shuffling : No Display Question Number : Yes Is Question Mandatory : No Single Line Question Option : No Option Orientation : Vertical Correct Marks : 1 Wrong Marks : 0

Nanosphere consists of a _____ structure

1. Vesicular
2. Reservoir
3. Matrix
4. Both 1 and 3

Options :

- 8995144884. 1
- 8995144885. 2
- 8995144886. 3
- 8995144887. 4

Question Number : 33 Question Id : 8995141228 Question Type : MCQ Option Shuffling : No Display Question Number : Yes Is Question Mandatory : No Single Line Question Option : No Option Orientation : Vertical

Correct Marks : 1 Wrong Marks : 0

Dendrimers can be synthesized via

1. Divergent synthesis
2. Convergent synthesis
3. Both 1 and 2
4. Either 1 and 2

Options :

- 8995144888. 1
- 8995144889. 2
- 8995144890. 3
- 8995144891. 4

Question Number : 34 Question Id : 8995141229 Question Type : MCQ Option Shuffling : No Display Question Number : Yes Is Question Mandatory : No Single Line Question Option : No Option Orientation : Vertical

Correct Marks : 1 Wrong Marks : 0

EPR effect is due to....

1. Vasculature in tumor is hyper permeable
2. Hyper and leaky vascularization
3. Ineffective lymphatic drainage
4. All of the above

Options :

- 8995144892. 1
- 8995144893. 2
- 8995144894. 3
- 8995144895. 4

Question Number : 35 Question Id : 8995141230 Question Type : MCQ Option Shuffling : No Display Question Number : Yes Is Question Mandatory : No Single Line Question Option : No Option Orientation : Vertical

Correct Marks : 1 Wrong Marks : 0

Drug release from osmotic systems follows _____

1. Higuchi's Kinetics
2. Zero Order Kinetics
3. First Order Kinetics
4. None of the above

Options :

- 8995144896. 1
- 8995144897. 2
- 8995144898. 3
- 8995144899. 4

Question Number : 36 Question Id : 8995141231 Question Type : MCQ Option Shuffling : No Display Question Number : Yes Is Question Mandatory : No Single Line Question Option : No Option Orientation : Vertical

Correct Marks : 1 Wrong Marks : 0

Which one is an example of a plasticizer?

- 1.Triethyl acetate
- 2.Polyethylene glycol
- 3.Glucose
- 4.Both 1 and 2

Options :

- 8995144900. 1
- 8995144901. 2
- 8995144902. 3
- 8995144903. 4

Question Number : 37 Question Id : 8995141232 Question Type : MCQ Option Shuffling : No Display Question Number : Yes Is Question Mandatory : No Single Line Question Option : No Option Orientation : Vertical Correct Marks : 1 Wrong Marks : 0

The raw data of the pure protein sample (electron-density maps, etc) obtained by analytical techniques are processed by the help of state of-the-art molecular modeling tools such as

1. SHELX
2. HKL Suite
- 3.Pymol
- 4.Both 1 and 2

Options :

- 8995144904. 1
- 8995144905. 2
- 8995144906. 3
- 8995144907. 4

Question Number : 38 Question Id : 8995141233 Question Type : MCQ Option Shuffling : No Display Question Number : Yes Is Question Mandatory : No Single Line Question Option : No Option Orientation : Vertical Correct Marks : 1 Wrong Marks : 0

Which one of the following statements is **false** for mass spectroscopy?

1. Mass spectroscopy is used to identify unknown compounds within a sample, and to elucidate the structure and chemical properties of different molecules
2. Particles are characterized by their mass to charge ratios (m/z) and relative abundances
3. This technique basically studies the effect of ionizing energy on molecules
4. This technique can be used on all states of matter

Options :

- 8995144908. 1
- 8995144909. 2
- 8995144910. 3
- 8995144911. 4

Question Number : 39 Question Id : 8995141234 Question Type : MCQ Option Shuffling : No Display Question Number : Yes Is Question Mandatory : No Single Line Question Option : No Option Orientation : Vertical Correct Marks : 1 Wrong Marks : 0

Which one of the following main components of the mass spectroscopy deals with resolving the ions into their characteristic mass components according to their mass-to-charge ratio?

1. Ion Source
2. Analyzer
3. Detector System
4. Analyzer tube

Options :

- 8995144912. 1
- 8995144913. 2
- 8995144914. 3
- 8995144915. 4

Question Number : 40 Question Id : 8995141235 Question Type : MCQ Option Shuffling : No Display Question Number : Yes Is Question Mandatory : No Single Line Question Option : No Option Orientation : Vertical

Correct Marks : 1 Wrong Marks : 0

In which state of matter, mass spectroscopy is performed?

1. Solid
2. Liquid
3. Gaseous
4. Plasma

Options :

- 8995144916. 1
- 8995144917. 2
- 8995144918. 3
- 8995144919. 4

Question Number : 41 Question Id : 8995141236 Question Type : MCQ Option Shuffling : No Display Question Number : Yes Is Question Mandatory : No Single Line Question Option : No Option Orientation : Vertical

Correct Marks : 1 Wrong Marks : 0

Which type of ionic species are allowed to pass through the slit and eventually reach the collecting plate?

1. Negative ions of all masses
2. Positive ions of the specific mass
3. Negative ions of the specific mass
4. Positive ions of all masses

Options :

- 8995144920. 1
- 8995144921. 2
- 8995144922. 3
- 8995144923. 4

Question Number : 42 Question Id : 8995141237 Question Type : MCQ Option Shuffling : No Display Question Number : Yes Is Question Mandatory : No Single Line Question Option : No Option Orientation : Vertical

Correct Marks : 1 Wrong Marks : 0

Which of the following is **not** a type of ion detector used in mass spectrometers?

1. Electron multiplier
2. Flame emission detector
3. Faraday cup collector
4. Photographic plates

Options :

- 8995144924. 1
- 8995144925. 2
- 8995144926. 3
- 8995144927. 4

Question Number : 43 Question Id : 8995141238 Question Type : MCQ Option Shuffling : No Display Question Number : Yes Is Question Mandatory : No Single Line Question Option : No Option Orientation : Vertical Correct Marks : 1 Wrong Marks : 0

Elimination rate constant of a drug is 3 hours. What would be the elimination half-life value?

1. 0.135 per hour
2. 0.202 per hour
3. 0.231 per hour
4. 0.314 per hour

Options :

- 8995144928. 1
- 8995144929. 2
- 8995144930. 3
- 8995144931. 4

Question Number : 44 Question Id : 8995141239 Question Type : MCQ Option Shuffling : No Display Question Number : Yes Is Question Mandatory : No Single Line Question Option : No Option Orientation : Vertical Correct Marks : 1 Wrong Marks : 0

Which of the following is the pharmacodynamics method of studying bioavailability?

1. Acute pharmacologic response
2. Plasma-level time studies
3. Urinary excretion studies
4. Stool excretion studies

Options :

- 8995144932. 1
- 8995144933. 2
- 8995144934. 3
- 8995144935. 4

Question Number : 45 Question Id : 8995141240 Question Type : MCQ Option Shuffling : No Display Question Number : Yes Is Question Mandatory : No Single Line Question Option : No Option Orientation : Vertical Correct Marks : 1 Wrong Marks : 0

Particles having poly dispersity index > 0.4 are called _____

1. Lowly monodisperse
2. moderately polydisperse
3. highly monodisperse
4. highly polydisperse

Options :

- 8995144936. 1
- 8995144937. 2
- 8995144938. 3
- 8995144939. 4

Question Number : 46 Question Id : 8995141241 Question Type : MCQ Option Shuffling : No Display Question Number : Yes Is Question Mandatory : No Single Line Question Option : No Option Orientation : Vertical Correct Marks : 1 Wrong Marks : 0

Bottle is an example of _____

- 1.Primary packaging
- 2.Secondary packaging
- 3.Tertiary packaging
- 4.All of the above

Options :

- 8995144940. 1
- 8995144941. 2
- 8995144942. 3
- 8995144943. 4

Question Number : 47 Question Id : 8995141242 Question Type : MCQ Option Shuffling : No Display Question Number : Yes Is Question Mandatory : No Single Line Question Option : No Option Orientation : Vertical Correct Marks : 1 Wrong Marks : 0

What is the full form of “IND” according to FDA

- 1.Investigational novel drug
2. Investigational new drug
- 3.Isolated new drug
- 4.Investigated newer drugs

Options :

- 8995144944. 1
- 8995144945. 2
- 8995144946. 3
- 8995144947. 4

Question Number : 48 Question Id : 8995141243 Question Type : MCQ Option Shuffling : No Display Question Number : Yes Is Question Mandatory : No Single Line Question Option : No Option Orientation : Vertical Correct Marks : 1 Wrong Marks : 0

Phase-II clinical trial is done to establish _____

- 1.Safety
- 2.Efficacy
3. Large scale study
- 4.Pharmacovigilance

Options :

- 8995144948. 1
- 8995144949. 2
- 8995144950. 3
- 8995144951. 4

Question Number : 49 Question Id : 8995141244 Question Type : MCQ Option Shuffling : No Display Question Number : Yes Is Question Mandatory : No Single Line Question Option : No Option Orientation : Vertical Correct Marks : 1 Wrong Marks : 0

The step/steps involved in the drug design include _____

- 1.Target identification
- 2.Lead identification
- 3.Validation and optimization
- 4.All of the above

Options :

- 8995144952. 1
- 8995144953. 2
- 8995144954. 3
- 8995144955. 4

Question Number : 50 Question Id : 8995141245 Question Type : MCQ Option Shuffling : No Display Question Number : Yes Is Question Mandatory : No Single Line Question Option : No Option Orientation : Vertical Correct Marks : 1 Wrong Marks : 0

Jamaica ginger drink tragedy was happened in the year _____

- 1.1930
- 2.1920
- 3.1945
- 4.1980

Options :

- 8995144956. 1
- 8995144957. 2
- 8995144958. 3
- 8995144959. 4

Question Number : 51 Question Id : 8995141246 Question Type : MCQ Option Shuffling : No Display Question Number : Yes Is Question Mandatory : No Single Line Question Option : No Option Orientation : Vertical Correct Marks : 1 Wrong Marks : 0

Thalidomide tragedy was happened in the year _____

- 1.1951
- 2.1955
- 3.1970
- 4.1985

Options :

- 8995144960. 1
- 8995144961. 2
- 8995144962. 3
- 8995144963. 4

Question Number : 52 Question Id : 8995141247 Question Type : MCQ Option Shuffling : No Display Question Number : Yes Is Question Mandatory : No Single Line Question Option : No Option Orientation : Vertical Correct Marks : 1 Wrong Marks : 0

Why prodrugs are used?

1. To Increase the solubility
2. To enhance the lipophilicity
3. To extend the half-life
4. All of the above

Options :

- 8995144964. 1
- 8995144965. 2
- 8995144966. 3
- 8995144967. 4

Question Number : 53 Question Id : 8995141248 Question Type : MCQ Option Shuffling : No Display Question Number : Yes Is Question Mandatory : No Single Line Question Option : No Option Orientation : Vertical

Correct Marks : 1 Wrong Marks : 0

Which esterase catalyzes the biotransformation of a prodrug?

- 1.Choline esterase
- 2.Lipase
- 3.Both 1 and 2
- 4.None of the above

Options :

- 8995144968. 1
- 8995144969. 2
- 8995144970. 3
- 8995144971. 4

Question Number : 54 Question Id : 8995141249 Question Type : MCQ Option Shuffling : No Display Question Number : Yes Is Question Mandatory : No Single Line Question Option : No Option Orientation : Vertical

Correct Marks : 1 Wrong Marks : 0

Alcohol or carboxylic acid containing drugs generally present in _____ form of the prodrug.

1. Ester
2. Amine
3. Amide
4. Oxime

Options :

8995144972. 1
8995144973. 2
8995144974. 3
8995144975. 4

Question Number : 55 Question Id : 8995141250 Question Type : MCQ Option Shuffling : No Display Question Number : Yes Is Question Mandatory : No Single Line Question Option : No Option Orientation : Vertical Correct Marks : 1 Wrong Marks : 0

Heroin is a prodrug of _____

1. Diclofenac
2. Morphine
3. Cocaine
4. Codeine

Options :

8995144976. 1
8995144977. 2
8995144978. 3
8995144979. 4

Question Number : 56 Question Id : 8995141251 Question Type : MCQ Option Shuffling : No Display Question Number : Yes Is Question Mandatory : No Single Line Question Option : No Option Orientation : Vertical Correct Marks : 1 Wrong Marks : 0

Dopamine is an example of _____

1. Ester prodrug
2. Amide prodrug
3. Phenolic prodrug
4. Double ester prodrug

Options :

- 8995144980. 1
- 8995144981. 2
- 8995144982. 3
- 8995144983. 4

Question Number : 57 Question Id : 8995141252 Question Type : MCQ Option Shuffling : No Display Question Number : Yes Is Question Mandatory : No Single Line Question Option : No Option Orientation : Vertical

Correct Marks : 1 Wrong Marks : 0

Which one is an example of N-Mannich base prodrug?

1. Talampicillin
2. Rolitetracyclin
3. Catechols
4. Ampicillin

Options :

- 8995144984. 1
- 8995144985. 2
- 8995144986. 3
- 8995144987. 4

Question Number : 58 Question Id : 8995141253 Question Type : MCQ Option Shuffling : No Display Question Number : Yes Is Question Mandatory : No Single Line Question Option : No Option Orientation : Vertical

Correct Marks : 1 Wrong Marks : 0

What are mutual prodrugs?

1. Prodrug having a carrier group, attached via linker/spacer to the drug
2. Prodrug composed of one carrier (group) attached to the drug.
3. Prodrug consists of two pharmacologically active agents coupled together so that each acts as a pro-moiety for the other agent and vice versa.
4. None of the above

Options :

- 8995144988. 1
- 8995144989. 2
- 8995144990. 3
- 8995144991. 4

Question Number : 59 Question Id : 8995141254 Question Type : MCQ Option Shuffling : No Display Question Number : Yes Is Question Mandatory : No Single Line Question Option : No Option Orientation : Vertical Correct Marks : 1 Wrong Marks : 0

Phenylbutazone is an example of-----

1. Bipartate prodrug
2. Tripartate prodrug
3. Mutual prodrug
4. Bioprecursor prodrug

Options :

- 8995144992. 1
- 8995144993. 2
- 8995144994. 3
- 8995144995. 4

Question Number : 60 Question Id : 8995141255 Question Type : MCQ Option Shuffling : No Display Question Number : Yes Is Question Mandatory : No Single Line Question Option : No Option Orientation : Vertical Correct Marks : 1 Wrong Marks : 0

What is/are the requirement/requirements for site specific drug delivery via prodrug?

- 1.Prodrug has to reach the site of action in high concentrations
- 2.Knowledge of high metabolism at the site
- 3.Extent of organ or site perfusion
- 4.All of the above

Options :

- 8995144996. 1
- 8995144997. 2
- 8995144998. 3
- 8995144999. 4

Question Number : 61 Question Id : 8995141256 Question Type : MCQ Option Shuffling : No Display Question Number : Yes Is Question Mandatory : No Single Line Question Option : No Option Orientation : Vertical

Correct Marks : 1 Wrong Marks : 0

What is the Type-IA prodrug?

- 1.Metabolized at the cellular targets of their therapeutic actions
- 2.Converts into parent drug by metabolic tissues, namely by the liver
- 3.Metabolized by the GI Fluids
- 4.Metabolized in the systemic circulation

Options :

- 8995145000. 1
- 8995145001. 2
- 8995145002. 3
- 8995145003. 4

Question Number : 62 Question Id : 8995141257 Question Type : MCQ Option Shuffling : No Display Question Number : Yes Is Question Mandatory : No Single Line Question Option : No Option Orientation : Vertical

Correct Marks : 1 Wrong Marks : 0

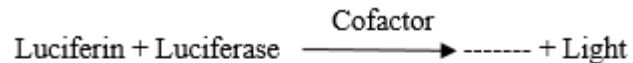
Bioluminescence is defined as:

- 1.The emission of light as a result of an electrochemical reaction
- 2.The emission of light as a result of biochemical reactions in a living organism.
- 3.The emission of light as a result of a chemical reaction.
- 4.The emission of light as a result of absorption of photons

Options :

8995145004. 1
8995145005. 2
8995145006. 3
8995145007. 4

Question Number : 63 Question Id : 8995141258 Question Type : MCQ Option Shuffling : No Display Question Number : Yes Is Question Mandatory : No Single Line Question Option : No Option Orientation : Vertical Correct Marks : 1 Wrong Marks : 0



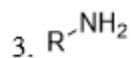
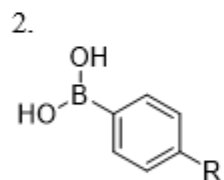
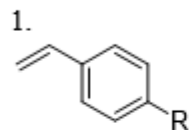
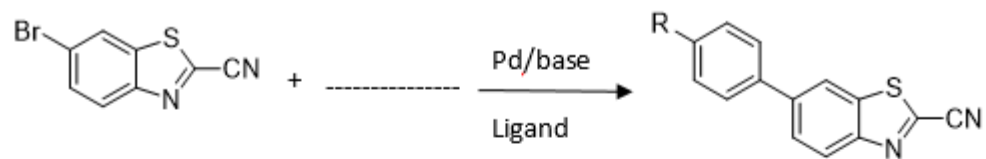
1. Oxyluciferin
2. D-luciferin
3. Coelentrazine
4. None of the above

Options :

8995145008. 1
8995145009. 2
8995145010. 3
8995145011. 4

Question Number : 64 Question Id : 8995141259 Question Type : MCQ Option Shuffling : No Display Question Number : Yes Is Question Mandatory : No Single Line Question Option : No Option Orientation : Vertical Correct Marks : 1 Wrong Marks : 0

Which is the correct option for the blank in the reaction given below:



4. None of the above

Options :

8995145012. 1

8995145013. 2

8995145014. 3

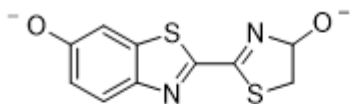
8995145015. 4

Question Number : 65 Question Id : 8995141260 Question Type : MCQ Option Shuffling : No Display Question Number : Yes Is Question Mandatory : No Single Line Question Option : No Option Orientation : Vertical

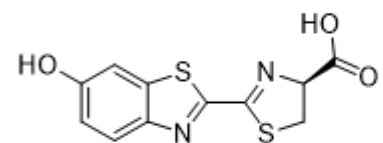
Correct Marks : 1 Wrong Marks : 0

Find the correct structure of luciferin:

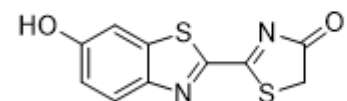
1.



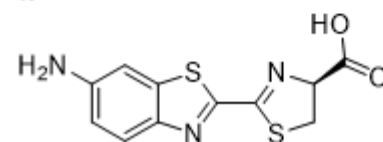
2.



3.



4.



Options :

8995145016. 1

8995145017. 2

8995145018. 3

8995145019. 4

Question Number : 66 Question Id : 8995141261 Question Type : MCQ Option Shuffling : No Display Question Number : Yes Is Question Mandatory : No Single Line Question Option : No Option Orientation : Vertical

Correct Marks : 1 Wrong Marks : 0

Which cytochrome enzyme is involved in production of light?

1. CYP3A4

2. CYP1A2

3. CYP2C9

4. CYP2D6

Options :

8995145020. 1

8995145021. 2

8995145022. 3

8995145023. 4

Question Number : 67 Question Id : 8995141262 Question Type : MCQ Option Shuffling : No Display Question Number : Yes Is Question Mandatory : No Single Line Question Option : No Option Orientation : Vertical

Correct Marks : 1 Wrong Marks : 0

Drugs are not effectively absorbed from colon due to

1. Extremely alkaline pH
2. Degradation of drug
3. Presence of Colonocytes
4. None of above

Options :

8995145024. 1

8995145025. 2

8995145026. 3

8995145027. 4

Question Number : 68 Question Id : 8995141263 Question Type : MCQ Option Shuffling : No Display Question Number : Yes Is Question Mandatory : No Single Line Question Option : No Option Orientation : Vertical

Correct Marks : 1 Wrong Marks : 0

How β -cyclodextrin (β -CD) can be used for colonic delivery of drug?

1. Making inclusion complex
2. Conjugating its surface -OH groups with drug
3. Making matrix tablet with β -CD
4. None of above

Options :

8995145028. 1

8995145029. 2

8995145030. 3

8995145031. 4

Question Number : 69 Question Id : 8995141264 Question Type : MCQ Option Shuffling : No Display Question Number : Yes Is

Question Mandatory : No Single Line Question Option : No Option Orientation : Vertical

Correct Marks : 1 Wrong Marks : 0

Sulphasalazine is a prodrug of and

- 1.5-ASA and sulphapyridine
- 2.5-ASA and sulphamethoxazole
- 3.5-ASA and sulphahydrine
- 4.5-ASA and 5ASA

Options :

- 8995145032. 1
- 8995145033. 2
- 8995145034. 3
- 8995145035. 4

Question Number : 70 Question Id : 8995141265 Question Type : MCQ Option Shuffling : No Display Question Number : Yes Is

Question Mandatory : No Single Line Question Option : No Option Orientation : Vertical

Correct Marks : 1 Wrong Marks : 0

What is the reason for sudden drop in pH in ascending colon from ileo-caecal region?

- 1.Metabolism of protein
- 2.Fermentation of Lactose
- 3.Metabolism of fats
- 4.None of the above

Options :

- 8995145036. 1
- 8995145037. 2
- 8995145038. 3
- 8995145039. 4

Question Number : 71 Question Id : 8995141266 Question Type : MCQ Option Shuffling : No Display Question Number : Yes Is

Question Mandatory : No Single Line Question Option : No Option Orientation : Vertical

Correct Marks : 1 Wrong Marks : 0

Dextran based prodrugs are degraded by which of the following colonic enzymes?

1. Azoreductase
2. Sulfatase
3. Dextranase
4. Esterase

Options :

- 8995145040. 1
- 8995145041. 2
- 8995145042. 3
- 8995145043. 4

Question Number : 72 Question Id : 8995141267 Question Type : MCQ Option Shuffling : No Display Question Number : Yes Is Question Mandatory : No Single Line Question Option : No Option Orientation : Vertical

Correct Marks : 1 Wrong Marks : 0

Which cells are responsible for uptake of NPs through Transcytosis?

1. M- cells
2. T- cells
3. Colonocytes
4. None of the above

Options :

- 8995145044. 1
- 8995145045. 2
- 8995145046. 3
- 8995145047. 4

Question Number : 73 Question Id : 8995141268 Question Type : MCQ Option Shuffling : No Display Question Number : Yes Is Question Mandatory : No Single Line Question Option : No Option Orientation : Vertical

Correct Marks : 1 Wrong Marks : 0

How many fold increase in mucosal ROS (reactive oxygen species) is there in ulcerative colitis?

- 1.1-10 fold
- 2.10-100 fold
- 3.100-200 fold
- 4.No increase

Options :

- 8995145048. 1
- 8995145049. 2
- 8995145050. 3
- 8995145051. 4

Question Number : 74 Question Id : 8995141269 Question Type : MCQ Option Shuffling : No Display Question Number : Yes Is Question Mandatory : No Single Line Question Option : No Option Orientation : Vertical Correct Marks : 1 Wrong Marks : 0

.....% of dry weight of feces consists of bacteria?

- 1.10
- 2.20
- 3.30
- 4.40

Options :

- 8995145052. 1
- 8995145053. 2
- 8995145054. 3
- 8995145055. 4

Question Number : 75 Question Id : 8995141270 Question Type : MCQ Option Shuffling : No Display Question Number : Yes Is Question Mandatory : No Single Line Question Option : No Option Orientation : Vertical Correct Marks : 1 Wrong Marks : 0

What is third order targeting?

- 1.Organs targeting
- 2.Cellular targeting
- 3.Intracellular targeting
- 4.None of above

Options :

- 8995145056. 1
- 8995145057. 2
- 8995145058. 3
- 8995145059. 4

Question Number : 76 Question Id : 8995141271 Question Type : MCQ Option Shuffling : No Display Question Number : Yes Is Question Mandatory : No Single Line Question Option : No Option Orientation : Vertical

Correct Marks : 1 Wrong Marks : 0

Which colonic enzyme is responsible for reducing/cleaving azo bonds?

- 1.Glucosidase
- 2.Galactosidase
- 3.Arabinosidase
- 4.Azoreductase

Options :

- 8995145060. 1
- 8995145061. 2
- 8995145062. 3
- 8995145063. 4

Question Number : 77 Question Id : 8995141272 Question Type : MCQ Option Shuffling : No Display Question Number : Yes Is Question Mandatory : No Single Line Question Option : No Option Orientation : Vertical

Correct Marks : 1 Wrong Marks : 0

Drug release from the Pulsincap® can be manipulated by----

- 1.Manipulating the entering coating of cap of the capsule
- 2.Manipulating the length of hydrogel plug
- 3.Increasing the length of the body of Capsule
- 4.None of above

Options :

- 8995145064. 1
- 8995145065. 2
- 8995145066. 3
- 8995145067. 4

Question Number : 78 Question Id : 8995141273 Question Type : MCQ Option Shuffling : No Display Question Number : Yes Is Question Mandatory : No Single Line Question Option : No Option Orientation : Vertical

Correct Marks : 1 Wrong Marks : 0

Montmorillonite is used for the following colonic disease-----

- 1.Inflammatory bowel disease
- 2.Colorectal cancer
- 3.Amebiasis
- 4.Irritable bowel disease

Options :

- 8995145068. 1
- 8995145069. 2
- 8995145070. 3
- 8995145071. 4

Question Number : 79 Question Id : 8995141274 Question Type : MCQ Option Shuffling : No Display Question Number : Yes Is Question Mandatory : No Single Line Question Option : No Option Orientation : Vertical

Correct Marks : 1 Wrong Marks : 0

Which one is a hard ionization technique?

1. Electron impact (EI)
2. Electrospray ionization (ESI)
3. Fast atom bombardment (FAB)
4. Field desorption (FD)

Options :

- 8995145072. 1
- 8995145073. 2
- 8995145074. 3
- 8995145075. 4

Question Number : 80 Question Id : 8995141275 Question Type : MCQ Option Shuffling : No Display Question Number : Yes Is Question Mandatory : No Single Line Question Option : No Option Orientation : Vertical

Correct Marks : 1 Wrong Marks : 0

Which is the correct statement for a molecule X (molecular weight = 550)

1. Its [M-H]⁺ peak will appear at 549
2. If doubly charged the peak will appear at 225.
3. Both statements are correct
4. Both statements are incorrect

Options :

- 8995145076. 1
- 8995145077. 2
- 8995145078. 3
- 8995145079. 4

Question Number : 81 Question Id : 8995141276 Question Type : MCQ Option Shuffling : No Display Question Number : Yes Is Question Mandatory : No Single Line Question Option : No Option Orientation : Vertical

Correct Marks : 1 Wrong Marks : 0

Drug disposition can be termed as..

1. Drug distribution
2. Drug elimination
3. Combination of both 1 and 2
4. None of the above

Options :

- 8995145080. 1
- 8995145081. 2
- 8995145082. 3
- 8995145083. 4

Question Number : 82 Question Id : 8995141277 Question Type : MCQ Option Shuffling : No Display Question Number : Yes Is Question Mandatory : No Single Line Question Option : No Option Orientation : Vertical

Correct Marks : 1 Wrong Marks : 0

The systemic drug absorption either from the gastrointestinal (GI) tract or from any other extravascular site is dependent on

- 1. The physicochemical properties of the drug
- 2. The dosage form used
- 3. The anatomy and physiology of the absorption site
- 4. All of the above

Options :

- 8995145084. 1
- 8995145085. 2
- 8995145086. 3
- 8995145087. 4

Question Number : 83 Question Id : 8995141278 Question Type : MCQ Option Shuffling : No Display Question Number : Yes Is Question Mandatory : No Single Line Question Option : No Option Orientation : Vertical

Correct Marks : 1 Wrong Marks : 0

What are the direct parameters that measure the rate and extent of absorption?

- 1. C_{max} and T_{max}
- 2. K_a and Absolute bioavailability(F)
- 3. C_{max} and AUC
- 4. T_{max} and AUC

Options :

- 8995145088. 1
- 8995145089. 2
- 8995145090. 3

8995145091. 4

Question Number : 84 Question Id : 8995141279 Question Type : MCQ Option Shuffling : No Display Question Number : Yes Is Question Mandatory : No Single Line Question Option : No Option Orientation : Vertical Correct Marks : 1 Wrong Marks : 0

How much drug should be given to a patient that weighs 75 kg and has a body water content of 50 L (assume uniform distribution of drug). Desired plasma concentration is 10 mg/L.

- 1.400mg
- 2.50mg
- 3.500mg
- 4.250mg

Options :

- 8995145092. 1
- 8995145093. 2
- 8995145094. 3
- 8995145095. 4

Question Number : 85 Question Id : 8995141280 Question Type : MCQ Option Shuffling : No Display Question Number : Yes Is Question Mandatory : No Single Line Question Option : No Option Orientation : Vertical Correct Marks : 1 Wrong Marks : 0

Determine the volume of distribution (Vd) of a drug with a total dose of 2,000 mg and a plasma concentration of 600 mg/L.

- 1. 0.33L
- 2. 3.33L
- 3. 2.3L
- 4. 1.3L

Options :

- 8995145096. 1
- 8995145097. 2
- 8995145098. 3
- 8995145099. 4

Question Number : 86 Question Id : 8995141281 Question Type : MCQ Option Shuffling : No Display Question Number : Yes Is Question Mandatory : No Single Line Question Option : No Option Orientation : Vertical Correct Marks : 1 Wrong Marks : 0

What is/are the appropriate criteria for bioequivalent products?

1. Difference in AUC, C_{max}, & T_{max}, of test and standard product Should remain within 20 % variation limit
2. Statistical non-significant difference in AUC, C_{max}, & T_{max} should be there between test and standard product.
3. Both 1 and 2
4. None of the above

Options :

- 8995145100. 1
- 8995145101. 2
- 8995145102. 3
- 8995145103. 4

Question Number : 87 Question Id : 8995141282 Question Type : MCQ Option Shuffling : No Display Question Number : Yes Is Question Mandatory : No Single Line Question Option : No Option Orientation : Vertical Correct Marks : 1 Wrong Marks : 0

A 2,000 mg dose with a plasma concentration of 600 mg/L has a clearance of 0.05 L/hr. What is the elimination rate constant (KE)?

1. 0.015 hr⁻¹
2. 0.15 hr⁻¹
3. 0.3 hr⁻¹
4. 0.13 hr⁻¹

Options :

- 8995145104. 1
- 8995145105. 2
- 8995145106. 3
- 8995145107. 4

Question Number : 88 Question Id : 8995141283 Question Type : MCQ Option Shuffling : No Display Question Number : Yes Is Question Mandatory : No Single Line Question Option : No Option Orientation : Vertical Correct Marks : 1 Wrong Marks : 0

Which one is commercially available database?

1. GRAC
2. ChemSpider
3. ChemBridge
4. PubChem

Options :

- 8995145108. 1
- 8995145109. 2
- 8995145110. 3
- 8995145111. 4

Question Number : 89 Question Id : 8995141284 Question Type : MCQ Option Shuffling : No Display Question Number : Yes Is Question Mandatory : No Single Line Question Option : No Option Orientation : Vertical Correct Marks : 1 Wrong Marks : 0

Which drug is successfully found by the SBDD approach?

1. Saquinavir
2. Aspirin
3. Diclofenac
4. Acyclovir

Options :

- 8995145112. 1
- 8995145113. 2
- 8995145114. 3
- 8995145115. 4

Question Number : 90 Question Id : 8995141285 Question Type : MCQ Option Shuffling : No Display Question Number : Yes Is Question Mandatory : No Single Line Question Option : No Option Orientation : Vertical Correct Marks : 1 Wrong Marks : 0

What is/are the structure based drug design (SBDD) software/software?

1. AutoDock
2. Glide
3. DOCK Version 6.6
4. All of the above

Options :

- 8995145116. 1
- 8995145117. 2
- 8995145118. 3
- 8995145119. 4

Question Number : 91 Question Id : 8995141286 Question Type : MCQ Option Shuffling : No Display Question Number : Yes Is Question Mandatory : No Single Line Question Option : No Option Orientation : Vertical

Correct Marks : 1 Wrong Marks : 0

The cardinal hallmarks of the “Alzheimer’s disease” are neuronal loss specifically ----- neurons in brain region responsible for memory, cognition, in addition to depletion of neurotransmitter and synaptic dysfunction.

- 1 Cholinergic
2. Dopamergic
3. Adrenergic
4. None of the above

Options :

- 8995145120. 1
- 8995145121. 2
- 8995145122. 3
- 8995145123. 4

Question Number : 92 Question Id : 8995141287 Question Type : MCQ Option Shuffling : No Display Question Number : Yes Is Question Mandatory : No Single Line Question Option : No Option Orientation : Vertical

Correct Marks : 1 Wrong Marks : 0

What are the current FDA approved drugs available for the treatment of Alzheimer's disease.

1. Donepezil
2. Rivastigmine
3. Galantamine
4. All of the above

Options :

- 8995145124. 1
- 8995145125. 2
- 8995145126. 3
- 8995145127. 4

Question Number : 93 Question Id : 8995141288 Question Type : MCQ Option Shuffling : No Display Question Number : Yes Is Question Mandatory : No Single Line Question Option : No Option Orientation : Vertical

Correct Marks : 1 Wrong Marks : 0

Drawing inferences based on visual observation of images obtained from pharmacological experiments incorporates.

1. Quality
2. Biasness
3. True value
4. Objectiveness

Options :

- 8995145128. 1
- 8995145129. 2
- 8995145130. 3
- 8995145131. 4

Question Number : 94 Question Id : 8995141289 Question Type : MCQ Option Shuffling : No Display Question Number : Yes Is Question Mandatory : No Single Line Question Option : No Option Orientation : Vertical

Correct Marks : 1 Wrong Marks : 0

ImageJ software platform was developed by

1. Wayne Rasband
2. Andrew Valeriana
3. Dwayne Rasband
4. Cann Rasband

Options :

- 8995145132. 1
- 8995145133. 2
- 8995145134. 3
- 8995145135. 4

Question Number : 95 Question Id : 8995141290 Question Type : MCQ Option Shuffling : No Display Question Number : Yes Is Question Mandatory : No Single Line Question Option : No Option Orientation : Vertical Correct Marks : 1 Wrong Marks : 0

The stroke area beside the ischemic core is called as

1. Ischemic dura
2. Ischemic penumbra
3. Ischemic locale
4. None of the above

Options :

- 8995145136. 1
- 8995145137. 2
- 8995145138. 3
- 8995145139. 4

Question Number : 96 Question Id : 8995141291 Question Type : MCQ Option Shuffling : No Display Question Number : Yes Is Question Mandatory : No Single Line Question Option : No Option Orientation : Vertical Correct Marks : 1 Wrong Marks : 0

Writhing test is used to study

1. Peripheral analgesics
2. Central analgesics
3. Both
4. None of the above

Options :

- 8995145140. 1
- 8995145141. 2
- 8995145142. 3
- 8995145143. 4

Question Number : 97 Question Id : 8995141292 Question Type : MCQ Option Shuffling : No Display Question Number : Yes Is Question Mandatory : No Single Line Question Option : No Option Orientation : Vertical Correct Marks : 1 Wrong Marks : 0

What are the factors that open gate according to “Gate control theory of pain”?

- 1.Stress
- 2.Lack of activity
- 3.Boredom
- 4.All of the above

Options :

- 8995145144. 1
- 8995145145. 2
- 8995145146. 3
- 8995145147. 4

Question Number : 98 Question Id : 8995141293 Question Type : MCQ Option Shuffling : No Display Question Number : Yes Is Question Mandatory : No Single Line Question Option : No Option Orientation : Vertical Correct Marks : 1 Wrong Marks : 0

Which one comes under pain state model using thermal stimuli?

1. Randall selitto test
2. Paw-withdrawal latency
3. von Frey hairs test
4. Grid - shock test

Options :

- 8995145148. 1
- 8995145149. 2
- 8995145150. 3
- 8995145151. 4

Question Number : 99 Question Id : 8995141294 Question Type : MCQ Option Shuffling : No Display Question Number : Yes Is Question Mandatory : No Single Line Question Option : No Option Orientation : Vertical

Correct Marks : 1 Wrong Marks : 0

The dissemination of mycobacterium from lungs to other parts of the body occurs via....

1. Macrophages
2. RBC
3. Dendritic cells
4. Both a and c

Options :

- 8995145152. 1
- 8995145153. 2
- 8995145154. 3
- 8995145155. 4

Question Number : 100 Question Id : 8995141295 Question Type : MCQ Option Shuffling : No Display Question Number : Yes Is Question Mandatory : No Single Line Question Option : No Option Orientation : Vertical

Correct Marks : 1 Wrong Marks : 0

But-2-yne has the structure $\text{H}_3\text{C}-\text{C}\equiv\text{C}-\text{CH}_3$. Major peaks in the mass spectrum of but-2-yne appear at $m/z = 54, 39$ and 27 . Which of the following is inconsistent with these data?

1. But-2-yne fragments by loss of two methyl groups.
2. The highest mass peak corresponds to $[\text{C}_4\text{H}_6]^+$.
3. But-2-yne fragments by loss of a methyl group.
4. But-2-yne fragments by cleavage of a C–C bond.

Options :

8995145156. 1

8995145157. 2

8995145158. 3

8995145159. 4